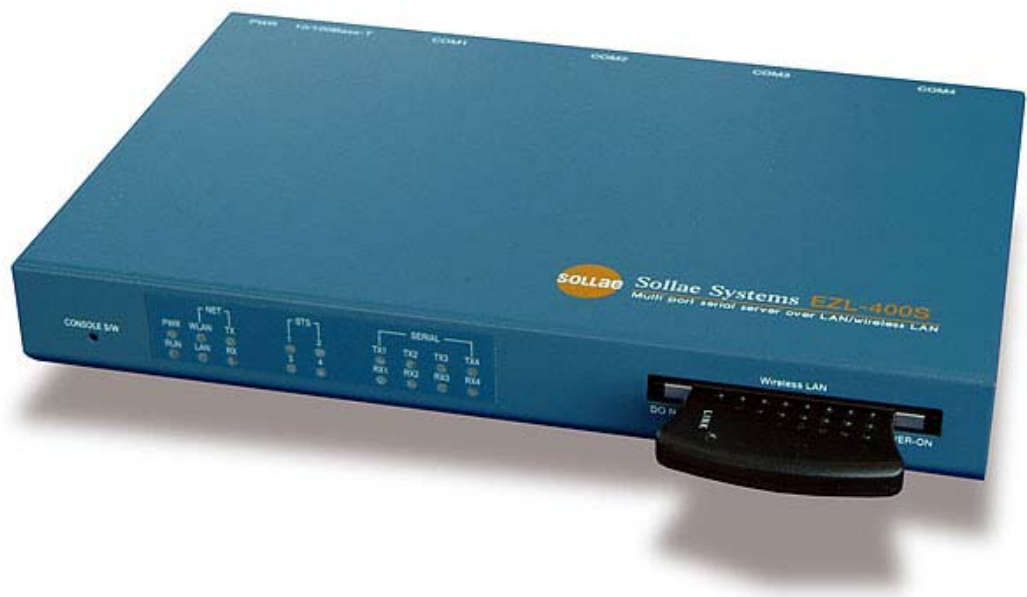


# EZL-400S Application Notes (001)

## Firmware Download

Version 1.0



You can download EZL-400S firmware over network(Ethernet or wireless LAN). To download the firmware over network, log on to the EZL-400S console, set EZL-400S to firmware download mode, and download the firmware using the TFTP client.

## 1.1. Download Firmware over the network

You can download the firmware over the network using the provided TFTP client hotflash.exe. The download process is described below.

### 1.1.1. Setting IP Address

To download the firmware over Ethernet you should set IP addresses for your EZL-400S environment: [LOCAL IP ADDRESS], [SUBNET MASK], and [GATEWAY IP ADDRESS].

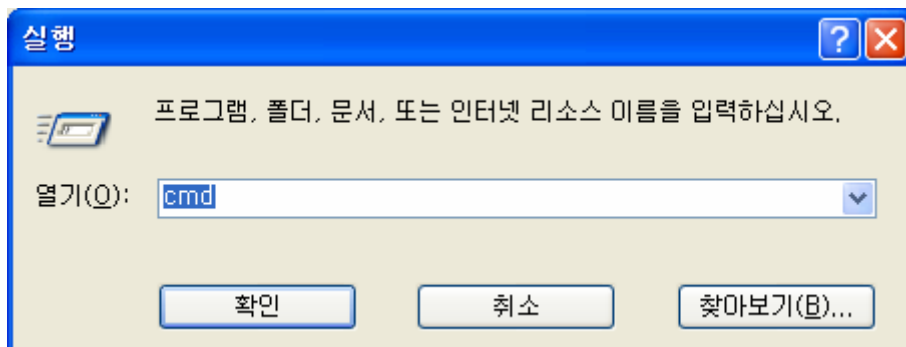
The description in this manual assumes IP addresses for PC and EZL-400S as follows:

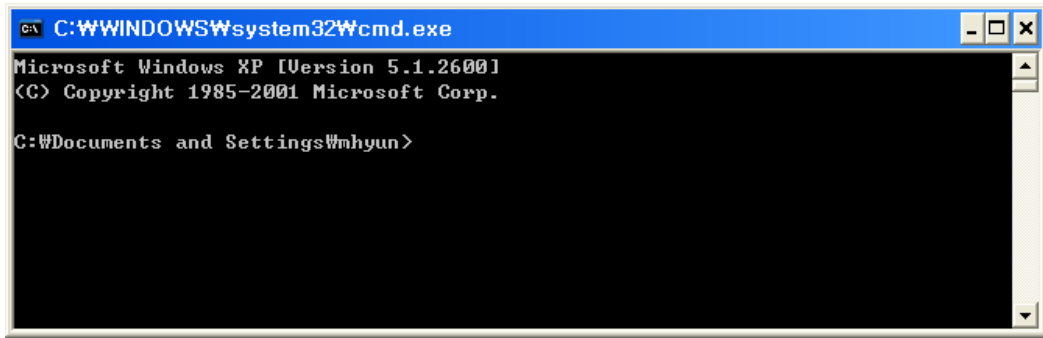
	PC	EZL-400S
Local IP Address	10.1.0.2	10.1.0.1
Subnet Mask	255.0.0.0	255.0.0.0
Gateway IP Address	10.1.0.254	10.1.0.254

You can set IP addresses using the provided ezcfgmp utility.

### 1.1.2. telnet login

Select [Run] in the Windows [Start] menu and type 'cmd' or 'command' to start DOS session.





```
C:\WINDOWS\system32\cmd.exe
Microsoft Windows XP [Version 5.1.2600]
(C) Copyright 1985-2001 Microsoft Corp.

C:\Documents and Settings\mhyun>
```

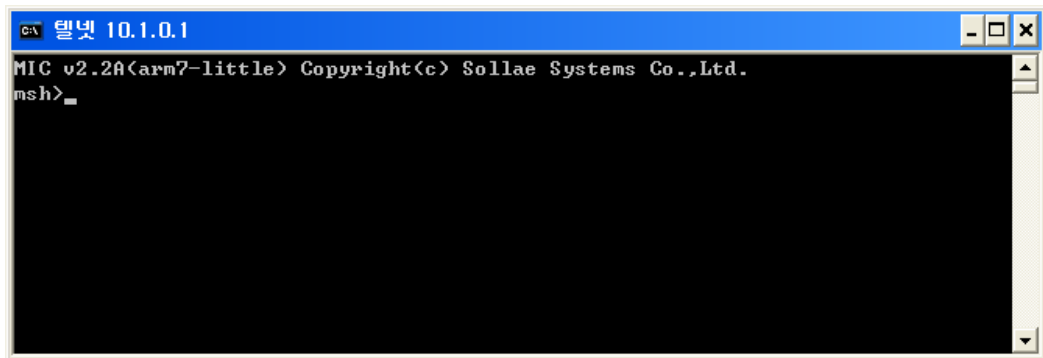
In the DOS window enter:

'telnet [LOCAL IP ADDRESS]',

where [LOCAL IP ADDRESS] is the IP address of EZL-400S set in the step 1.1.1.

e.g.) telnet 10.1.0.1

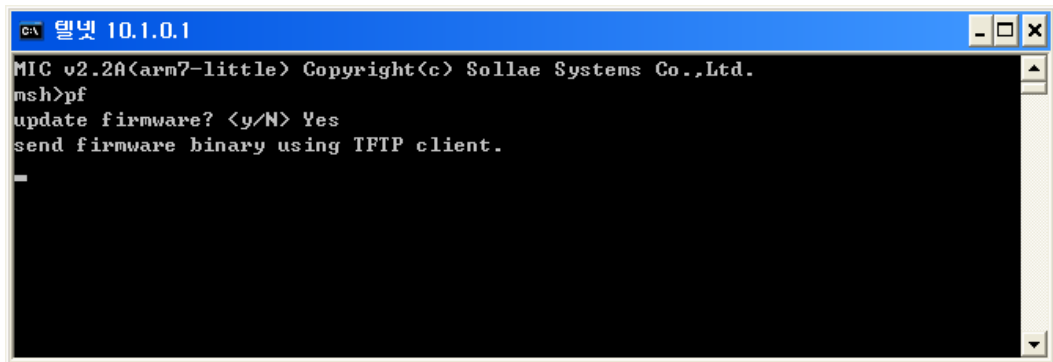
The following window will be displayed after login.



```
텔넷 10.1.0.1
MIC v2.20(arm7-little) Copyright(c) Solla Systems Co.,Ltd.
msh>
```

### 1.1.3. Entering firmware download command

After you have logged in telnet, enter the firmware download command 'pf'. You will be prompted whether you want to start firmware downloading. Enter 'y' to start downloading or 'n' to cancel.

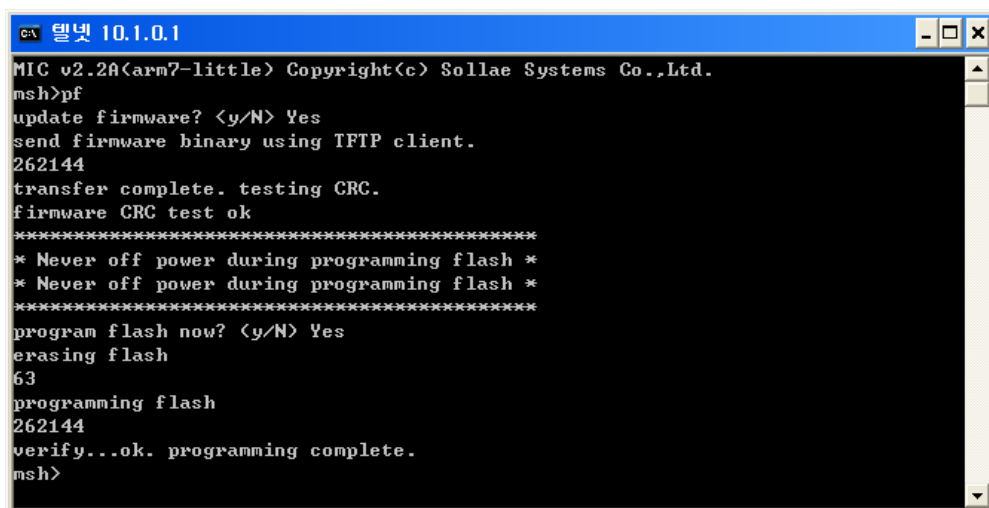


#### 1.1.4. Running hotflash and Downloading Firmware

Run hotflash when the message shown in 1.1.3 is displayed. Enter EZL-400S IP address, in the [FILE] menu select which firmware you want to download, and click [SEND] to start.



When hotflash finishes downloading files, you will be prompted whether you want to store files in the flash memory. Press 'y' to store downloaded files in EZL-400S flash memory.



### 1.1.5. Rebooting

After completing the download process, restart EZL-400S.

- ☞ *To check firmware version, select [Status] in the ezcfgmp.*
- ☞ *You can restart firmware downloading if you fail in firmware update.*

## 1.2. Revision History

Date	Version	Comments
Dec.02.2005	1.0	Initial Release