

PT100 Temperature Sensor Gateway

SIG-5561 User Manual

Version 1.2

Sollae Systems

<https://www.ezTCP.com>



This symbol, found on your product or on its packaging, indicates that this product should not be treated as household waste when you wish to dispose of it. Instead, it should be handed over to an applicable collection point for the recycling of electrical and electronic equipment. By ensuring this product is disposed of correctly, you will help prevent potential negative consequences to the environment and human health, which could otherwise be caused by inappropriate disposal of this product. The recycling of materials will help to conserve natural resources. For more detailed information about the recycling of this product, please contact your local city office, household waste disposal service or the retail store where you purchased this product.

Note:

This equipment has been tested and found to comply with the limits for a Class A digital device, pursuant to part 15 of the FCC Rules. These limits are designed to provide reasonable protection against harmful interference when the equipment is operated in a commercial environment. This equipment generates, uses, and can radiate radio frequency energy and, if not installed and used in accordance with the instruction manual, may cause harmful interference to radio communications. Operation of this equipment in a residential area is likely to cause harmful interference in which case the user will be required to correct the interference at his own expense.

Contents

1	Overview	4
1.1	Introduction	4
1.2	Features	4
1.3	Specification	5
1.4	Interface	6
1.4.1	Power	6
1.4.2	Ethernet	7
1.4.3	PT100 Connection Port	7
1.4.4	LED	8
1.4.5	Function Button	9
1.4.6	Setup Port	9
2	Preparation	10
2.1	Installing the Setting Tool	10
2.2	Connecting a Product	10
2.3	Searching Devices	10
2.4	Logging in	10
3	Settings	11
3.1	Network	11
3.1.1	Obtain an IP address automatically	11
3.1.2	Use a Static IP address	12
3.2	General	13
3.2.1	Comment	13
3.2.2	Mode	13
3.3	Security	14
3.3.1	Password	14
3.3.2	Certificate	14
3.3.3	spFinder	14
3.3.4	Client ID	15
4	Management	16
4.1	Checking Status	16
4.1.1	Product Information	16
4.1.2	Communication Status	17
4.1.3	Timeout	18
4.1.4	Copy Status	18
4.2	Firmware Change	19
4.2.1	Online Upgrade	19
4.2.2	Manual Upgrade	20
4.3	Console	21
4.3.1	Output Tab	21

- 4.3.2 FW Log Tab - 21 -
- 4.3.3 Timeout - 22 -
- 4.4 Export/Import Setting Values - 22 -
- 4.5 Factory Reset - 23 -
- 5 Technical Support and Warranty - 24 -**
 - 5.1 Technical Support - 24 -
 - 5.2 Warranty - 24 -
 - 5.2.1 Free Repair Services - 24 -
 - 5.2.2 Charged Repair Services..... - 24 -
- 6 Precaution and Exemption from Liability - 25 -**
 - 6.1 Precaution - 25 -
 - 6.2 Exemption from Liability - 26 -
 - 6.2.1 English version - 26 -
 - 6.2.2 French version - 27 -
- 7 Revision History - 29 -**

1 Overview

1.1 Introduction

SIG-5561 is an industrial PT100 Temperature Sensor Gateway. This product consisting of a PT100 connection port and an FND(Flexible Numeric Display) for displaying a temperature. The device measures temperature and sends it to Sollae Cloud. Users can remotely monitor the temperature measured by the sensor from anywhere via any web browser.



Figure 1-1 Diagram

1.2 Features

- PT100 connection port: support 3-wire PT100 sensors
- Display: a red 3-digit 7-segment LED
- Measurement Range: $-200^{\circ}\text{C} \sim 850^{\circ}\text{C}$ ($-328^{\circ}\text{F} \sim 1562^{\circ}\text{F}$)
- Measurement Error: within $\pm 0.3^{\circ}\text{C}$ ($\pm 0.54^{\circ}\text{F}$)
- Protocol: MQTT (over TLS 1.2)
- Secure (TLS mutual authentication)
- Configurable thresholds to trigger relays on SIG-5451, SIG-5601 devices
- Configurable thresholds to trigger an alarm on web
- Connected to Sollae Cloud
- Widget-based visualization (dashboard)
- Customizable graphic visualization by Sollae Studio
- Industrial temperature range ($-40^{\circ}\text{C} \sim +85^{\circ}\text{C}$)

1.3 Specification

Analog Input	
Input Type	3-wire PT100 sensor ($\alpha=0.00385 \Omega/(\Omega \cdot ^\circ\text{C})$)
Resolution	16 bits
Number of Ports	1 port
Network Physical Interface	
Network Interface	10Base-T/100Base-TX Ethernet (RJ45) Ethernet Speed Auto Sense 1:1 or Cross-over Cable Auto Sense
Software Functions	
Protocols	IPv4/IPv6 Dual Stack, TCP/UDP, ICMP, DHCP, mDNS, MQTT, SSL/TLS
Indicators	
LED	PWR, RUN, 3-digit 7-segment LED
Management	
spFinder	Configuration and Monitoring Tool
Security	Password
Dimension	
Size	94mm x 57mm x 24mm
Weight	about 64g
Operating Environment	
Input Voltage	DC5V \pm 0.25V
Protection	Reverse Voltage Protection / Surge Protection
Current Consumption	typically, 250mA
Operating Temperature	-40 $^\circ\text{C}$ ~ +85 $^\circ\text{C}$
Storage Temperature	-40 $^\circ\text{C}$ ~ +85 $^\circ\text{C}$
Certificate	
KC	Registration (KN 32, KN 35)
CE	EMC 2014/30/EU, RoHS 2011/65/EU
FCC	FCC Part 15 Subpart B, Class A

Table 1-1 Specification

1.4 Interface

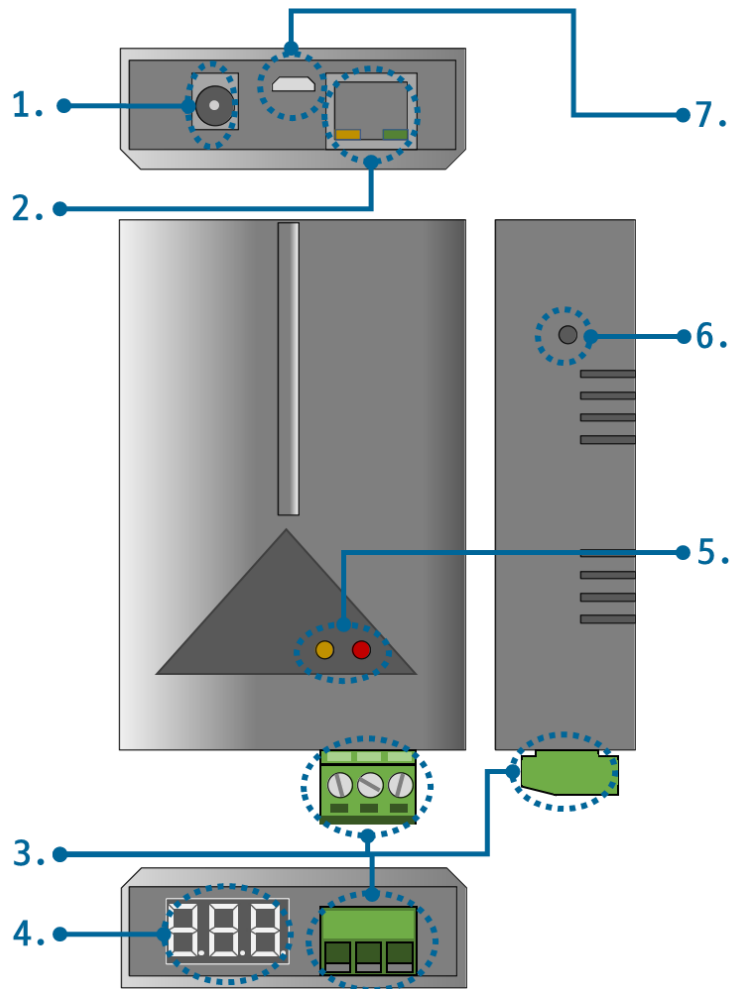


Figure 1-2 Interface

1.4.1 Power

SIG-5561 requires DC5V power supply whose specification is as follows:

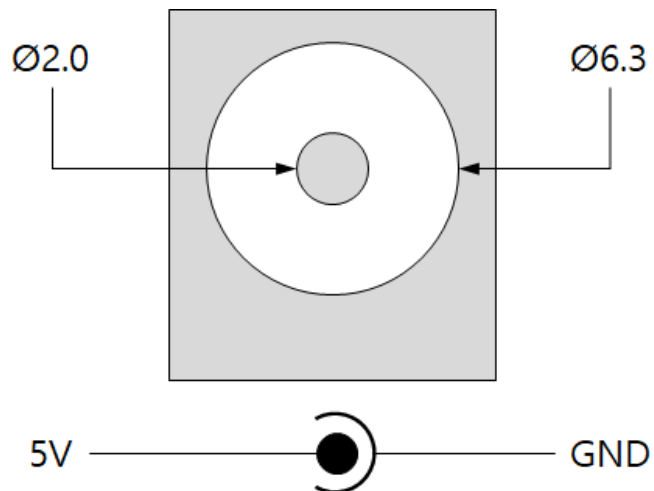


Figure 1-3 Power

1.4.2 Ethernet

SIG-5561 provides 10/100Mbps Ethernet. The pin assignment is as follows:

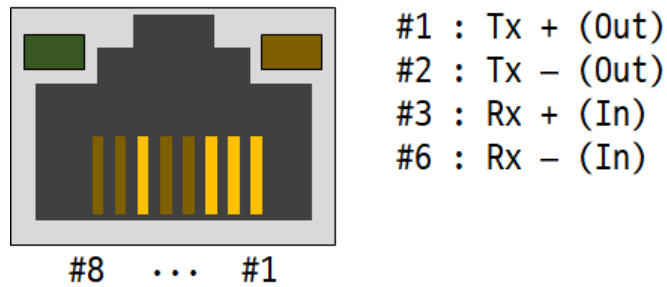


Figure 1-4 Ethernet

1.4.3 PT100 Connection Port

This port is interfaced with a 3.5mm pitch 3-pole terminal block. How to connect a PT100 sensor to this port is as follows:

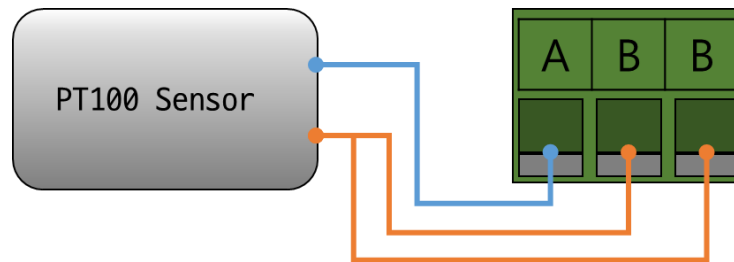


Figure 1-5 Connection with a PT100 sensor

- Port Specification

Division	Value
Sensor Type	3-wire PT100 ($\alpha=0.00385 \Omega/(\Omega \cdot ^\circ\text{C})$)
Measuring Range	$-200^\circ\text{C} \sim 850^\circ\text{C}$ ($-328^\circ\text{F} \sim 1562^\circ\text{F}$)

Table 1-2 Port Specification

1.4.4 LED

SIG-5561 provides 4 LEDs for indicating status.

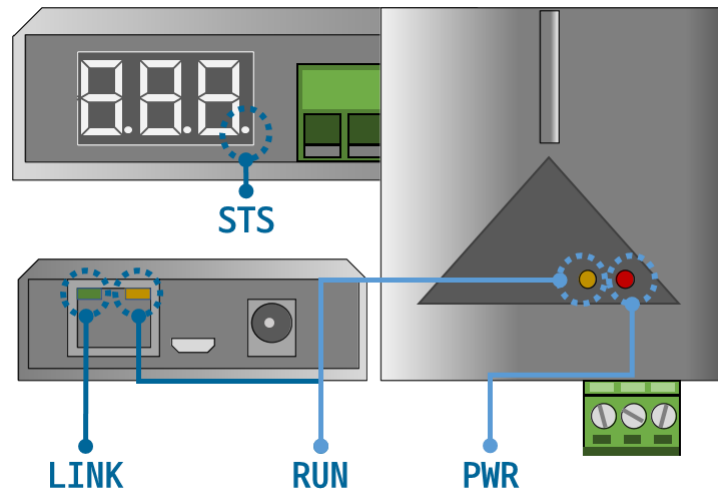


Figure 1-6 4 LEDs

LED operations according to each state are as follows:

When the supplied power is stable: PWR



When the supplied power is NOT stable: PWR



When the script is running: RUN



When the script is NOT running: RUN



When a network is NOT connected: LINK



When a network is connected: LINK



When The device cannot connect to the cloud: STS



When the device connected to the cloud but unregistered: STS



When the device connected to the cloud: STS



1.4.5 Function Button

This button is used to implement a factory reset.

1.4.6 Setup Port

This port is used for making a connection with a PC via USB cable.

2 Preparation

2.1 Installing the Setting Tool

You need a program which is called spFinder to use this product. Download the program on our web site and install it on your PC.

Functions of the spFinder are as follows:

- Searching products connected via network and USB
- Setting products
- Monitoring status of products

2.2 Connecting a Product

Connect a product with your PC via a LAN cable or a USB cable. In the case of using a LAN cable, note that your PC and the product should be on the same local area network.

2.3 Searching Devices

Run spFinder on your PC and press the search button. If you select the product found, the setup menu appears on the right.

2.4 Logging in

Before accessing the searched product, you need to log in first. The default ID and password are as follows:

Division	Default Values
ID	sig-5561
Password	sig-5561

Table 2-1 The default values of ID and password

If you search the product via network and it has the default value for a password, spFinder automatically processes the login.

3 Settings

3.1 Network

3.1.1 Obtain an IP address automatically

This product can automatically obtain an IP address by DHCP. A DHCP server is required to use this.

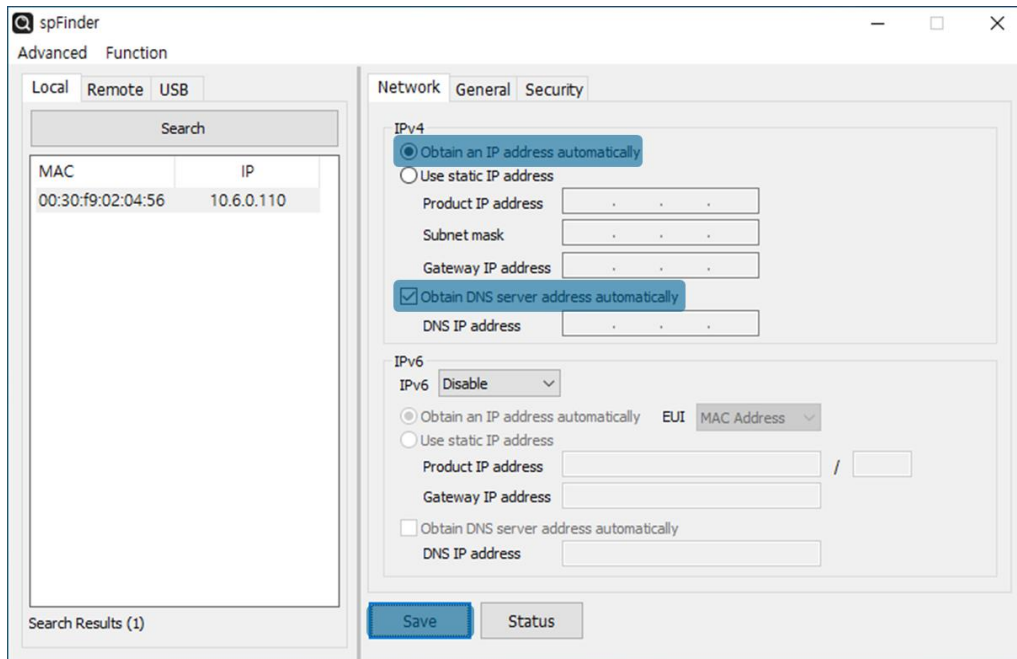


Figure 3-1 Obtain an IP address automatically

- Select the [Obtain an IP address automatically].
- Check the [Obtain DNS server address automatically] and click the [Save] button.

3.1.2 Use a Static IP address

You can set a static IP address to this product.

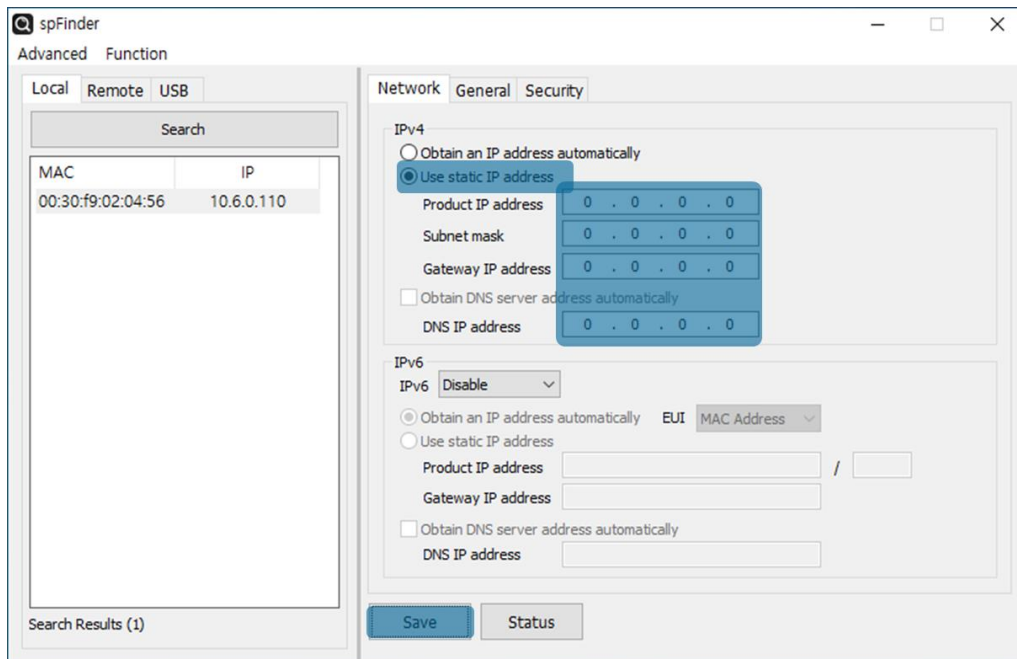


Figure 3-2 Use a static IP address

- Select the [Use static IP address].
- Set the [Local IP address], [Subnet mask], [Gateway IP address] and [DNS IP address].
- Click the [Save] button.

3.2 General

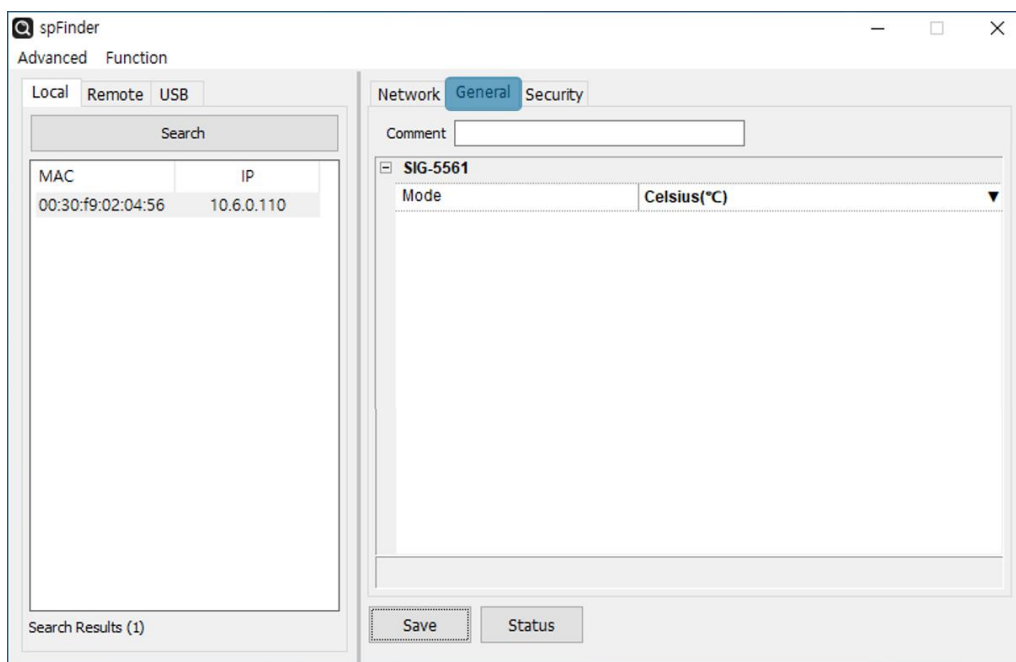


Figure 3-3 General

3.2.1 Comment

This setting is for storing the product description. The maximum setting size of this item is 32 bytes.

3.2.2 Mode

This setting is for selecting the temperature unit between Celsius and Fahrenheit.

3.3 Security

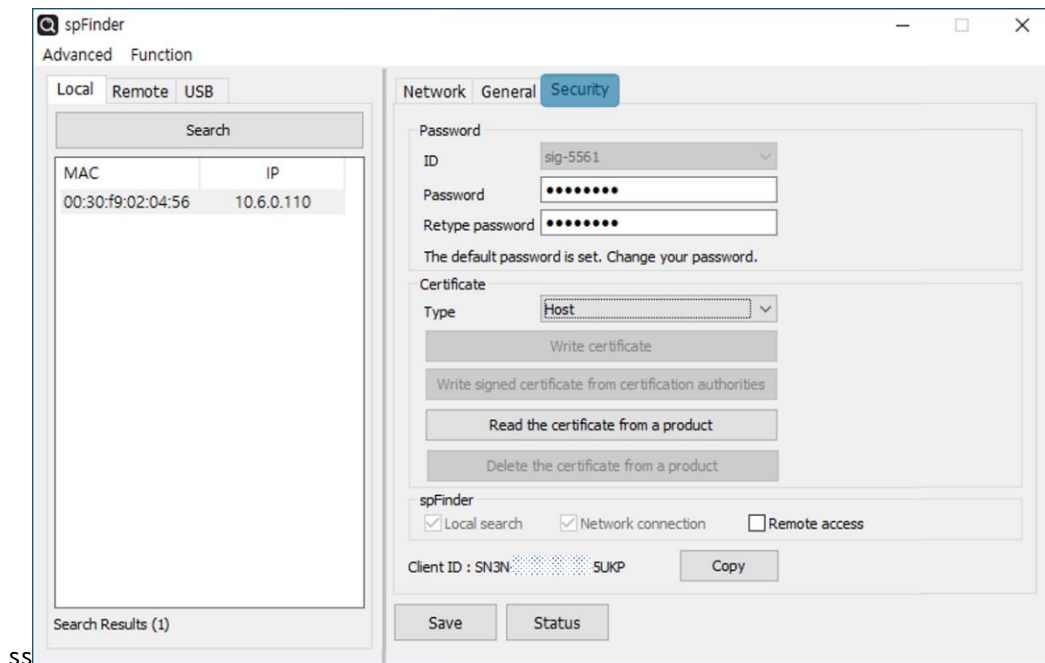


Figure 3-4 Security

3.3.1 Password

Both ID and password are required to access this product. Note that changing the default password to another is highly recommended for security. The password should be longer than 8 characters.

- Input a password to use to [Password] and [Confirm password].
- Click the [Save] button.

3.3.2 Certificate

The TLS certificates are pre-stored on the device. Please do not change them. Without certificates or with unauthorized certificates, the device is refused to connect to Sollae Cloud.

3.3.3 spFinder

These items are related to spFinder use.

- Local search

If this item is not checked, you will not be able to search for or connect to the product on your local network. This item can be set only when the product is connected via USB.
- Network connection

If this item is not checked, the product cannot be searched on the local network and the product cannot be connected on the local or remote network. This item can be set only when the product is connected via USB.

- Remote access

If this item is checked, the product can be connected from the remote network.
For security, this item is unchecked by default.

3.3.4 Client ID

The client ID is used to register the device on Sollae Cloud. See [how to register the device on Sollae Cloud](#).

4 Management

4.1 Checking Status

This is a function to view the current status of the product. Information in the [Status] window is automatically updated every second. After searching and connecting the product with spFinder, press the [Status] button to display this window. When you open this window, the spFinder connects to the product and keeps the connection until you close the window or time out. While the connection is maintained, other hosts cannot access the product using the spFinder.

4.1.1 Product Information

- Product Information Window

This area shows some major information of your product.

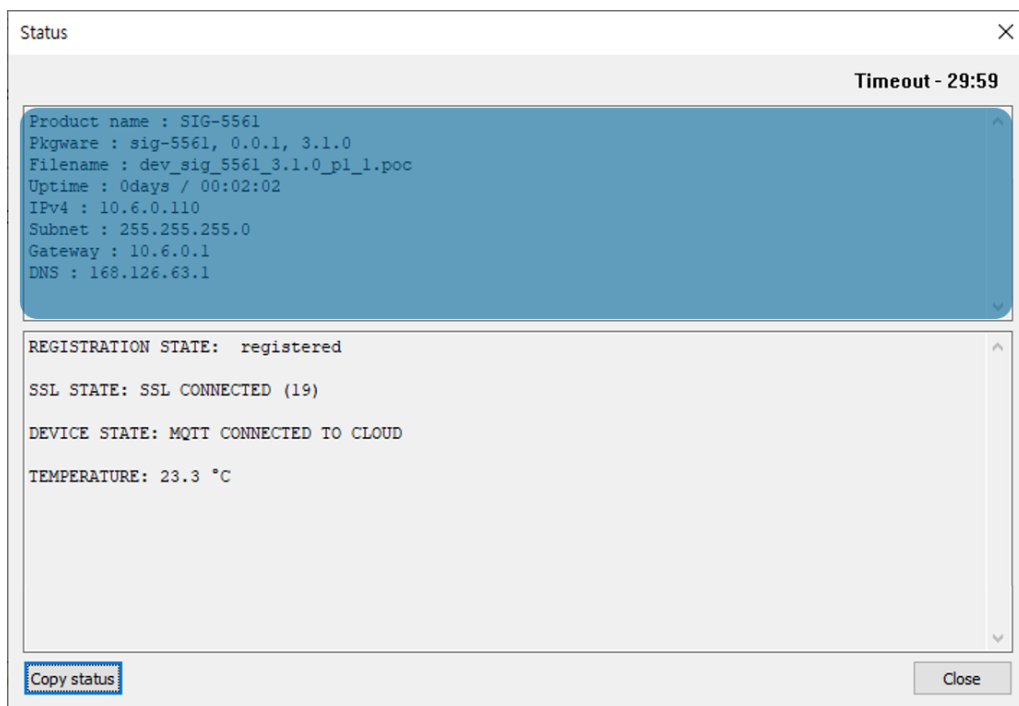


Figure 4-1 Product Information Window

- Product Information List

Item	Description
Product name	Product name
Pkgware	Model name, package version, Firmware version
File name	File name
Uptime	Elapsed time since it boots up (day / hour:min:sec)
IPv4	Assigned IPv4 address
Subnet	Assigned subnet mask
Gateway	Assigned gateway IP address
DNS	Assigned DNS server IP address

Table 4-1 Product Information List

4.1.2 Communication Status

- Communication Status Window

This area shows some communication status of your product. This area is refreshed every second.

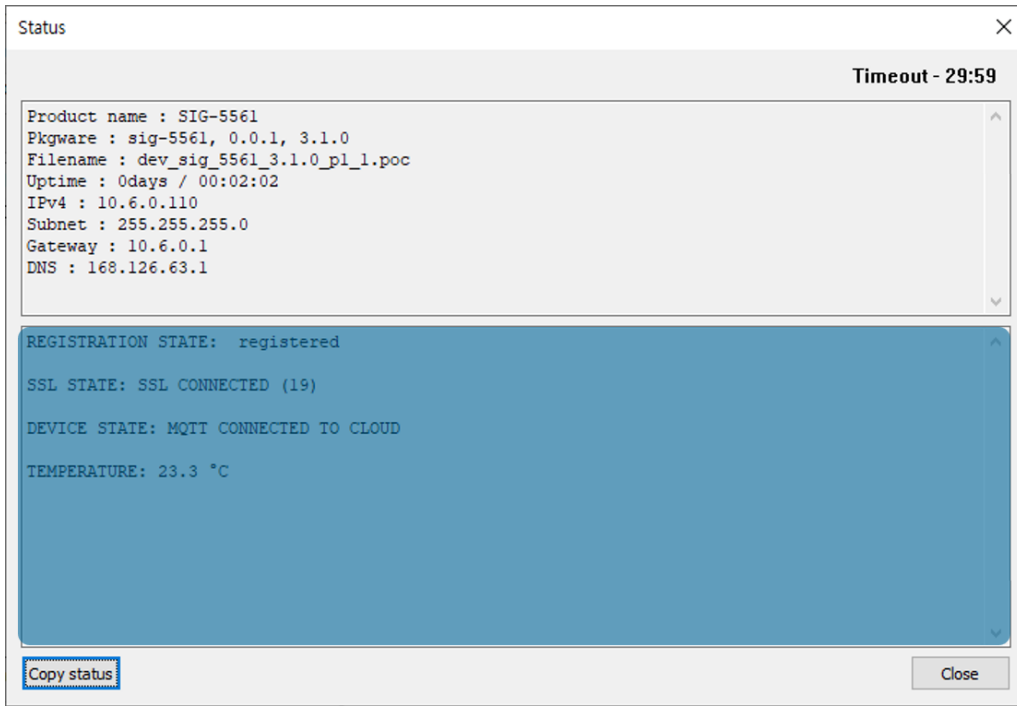


Figure 4-2 Communication Status Window

- REGISTRATION STATE

Status	Description
checking	Obtaining information from Cloud
unregistered	The device is not registered to any account
registered	The device is registered under an account

Table 4-2 REGISTRATION STATE

- SSL STATE

Status	Description
SSL CLOSED	Not connected to the cloud
SSL CONNECTED	Connected to the cloud
SSL CONNECTING	Connecting to the cloud
SSL CLOSING	Disconnecting from the cloud

Table 4-3 SSL STATE

● DEVICE STATE

Item
STARTING
UPDATING INFORMATION TO CLOUD
FAILED TO UPDATE INFORMATION TO CLOUD
DEVICE IS UNREGISTERED TO AN USER
CONNECTING MQTT SERVER
FAILED TO CONNECT TO MQTT SERVER
MQTT CLOSED
MQTT CONNECTED TO CLOUD
MQTT PING TO CLOUD
DELAYING BEFORE RECONNECTING
UPGRADING PKGWARE
CERTS FAILED

Table 4-4 DEVICE STATE

● TEMPERATURE

Item	Description
A number	Current temperature
E01	Internal error
E02	Internal error
E03	RTD is not connected to the device
E04	RTD is not connected properly to the device

Table 4-5 TEMPERATURE

4.1.3 Timeout

This is the timeout display function that appears in the upper right of the status window. When this time reaches zero, the connection between spFinder and the product is lost. The initial value is 30 minutes. If you move the mouse pointer in the internal area of the status window, the timer is reset to the initial value again.

4.1.4 Copy Status

Clicking the button copies all information displayed in the current status window to the clipboard.

4.2 Firmware Change

New firmware can be released when adding functions or fixing bugs. If you are using old firmware, you can upgrade it to the latest version. Firmware can be upgraded online or manually via spFinder.

4.2.1 Online Upgrade

If you can access to the Internet by your PC, the Firmware can be upgraded online.

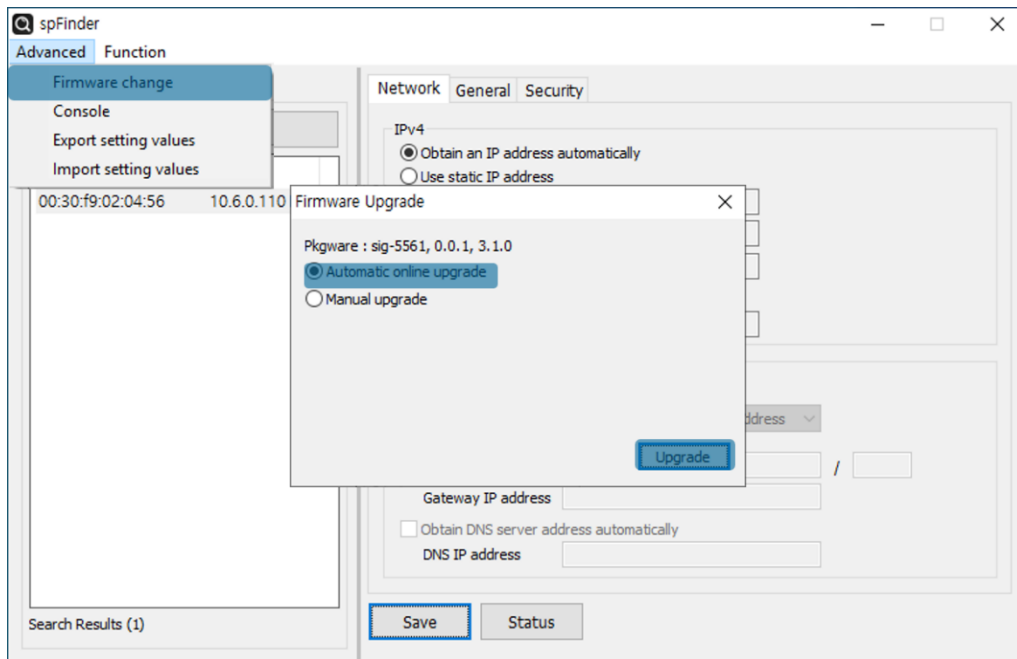


Figure 4-3 Online Upgrade

- Search and Connect to your product by spFinder.
- Click [Advanced] > [Firmware change] menu.
- Click [Upgrade] button selecting [Automatic online upgrade] menu.

4.2.2 Manual Upgrade

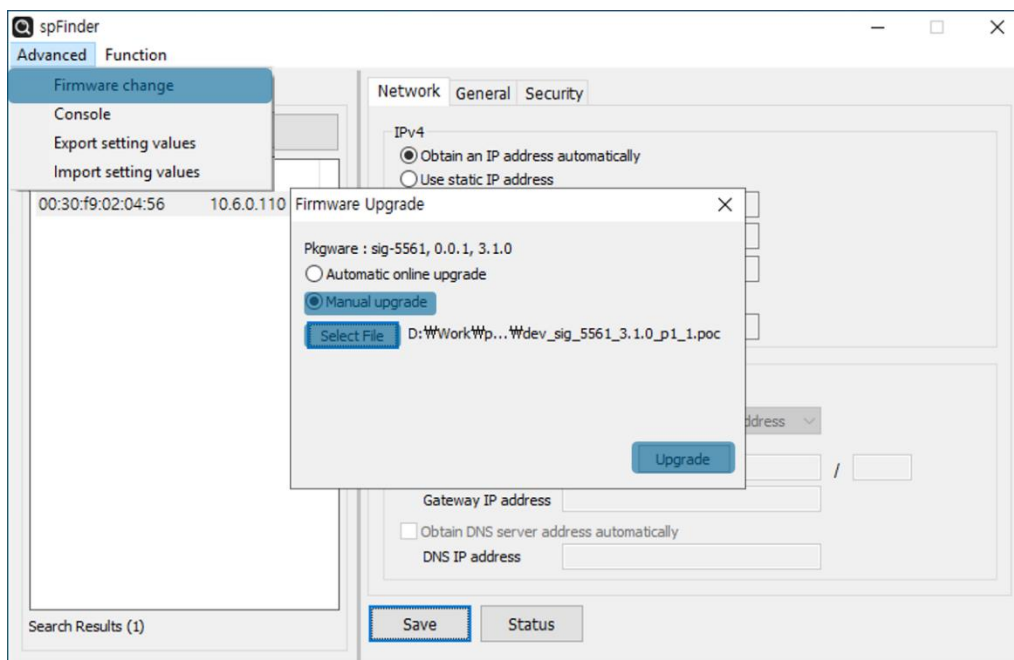


Figure 4-4 Manual Upgrade

- Download a Firmware file to your PC.
- Search and connect to your product by spFinder.
- Click [Advanced] > [Firmware Change] menu.
- Select to [Manual upgrade] on the [Firmware Upgrade] window.
- Click [Select File] button and select the Firmware file on you PC
- Click [Upgrade] button.

4.3 Console

The console function displays the device states and some debugging message.

After searching and connecting the product with spFinder, click [Console] in the [Advanced] menu to display the console window. When you open this window, the spFinder connects to the product and keeps the connection until you close the window or time out. While the connection is maintained, other hosts cannot access the product using the spFinder.

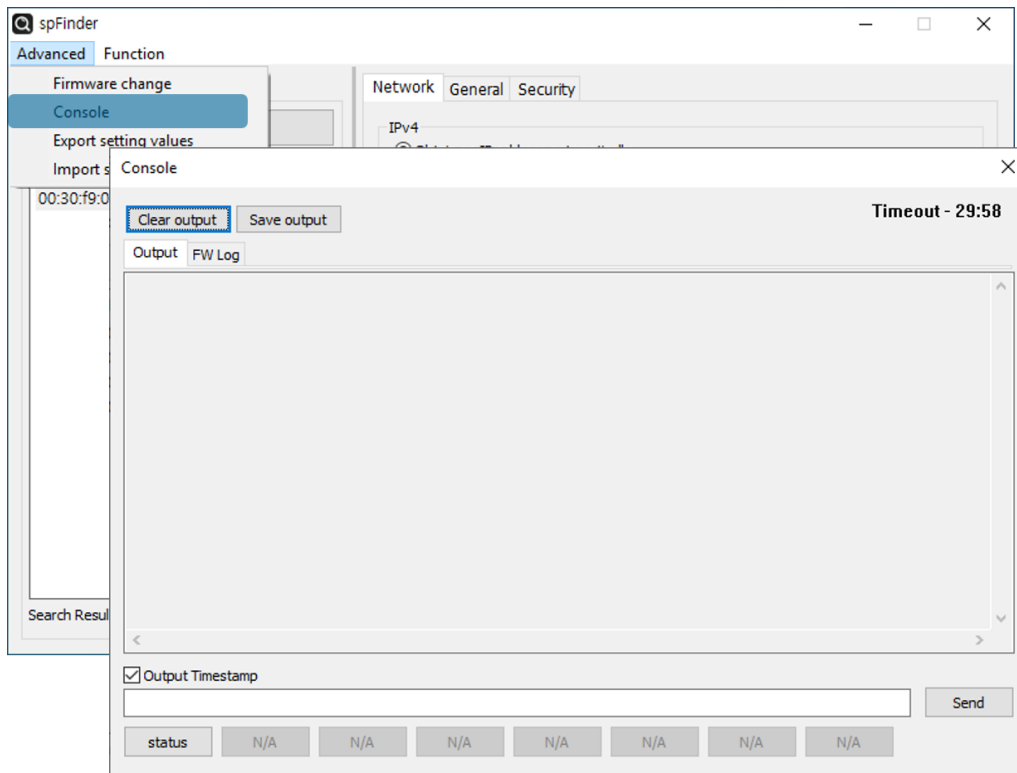


Figure 4-5 Console

4.3.1 Output Tab

This tab displays console messages.

- Clear output
Pressing this button clears all output messages on the Output tab.
- Save output
Press this button to save the message to be output to the Output tab as a file. While saving the message as a file, the size of the saved file is displayed, and the Timeout function does not work.
- status
Pressing this button outputs product status information on the Output tab

4.3.2 FW Log Tab

This tab displays the log message from Firmware.

4.3.3 Timeout

This is the timeout display function that appears in the upper right of the console window. When this time reaches zero, the connection between spFinder and the product is lost. The initial value is 30 minutes. If you move the mouse pointer in the internal area of the console window, the timer is reset to the initial value again. This function does not work while using the [Save output] function.

4.4 Export/Import Setting Values

The [Export setting values] menu saves all setting values of the product as a file except for the password. The [Import setting values] menu loads setting values from a file which is saved by the [Export setting values] menu. Note that you need to click the [Save] button to apply the setting to your product. Find these functions at the [Advanced] menu.

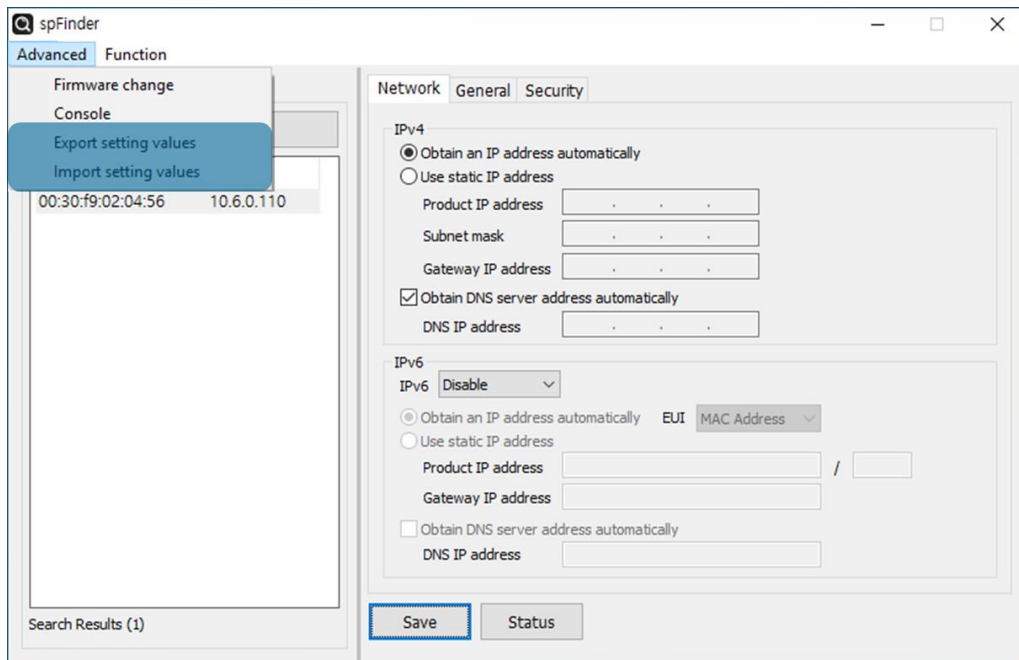


Figure 4-6 Export/Import Setting Values

4.5 Factory Reset

Performing the Factory Reset, you can restore all the settings to the default including the password. Follow the procedure below by checking the status of RUN LED.

1. Press and immediately release the function button.



2. Press the function button and keep the state more than 5 seconds.



3. Once the RUN led is turned off, release the button within 2 seconds.



4. The factory reset is started when you release the button. After that, your product will reboot.



5 Technical Support and Warranty

5.1 Technical Support

If you have any question regarding operation of the product, visit Customer Support FAQ corner and the message board on Sollae Systems' web site or send us an email at the following address:

- E-mail: support@eztcp.com
- Q & A board: <https://www.eztcp.com/en/support/qna.php>

5.2 Warranty

5.2.1 Free Repair Services

For product failures occurring within 2 years after purchase, Sollae Systems provides free repair services or exchange the product. However, if the product failure is due to user's fault, repair service fees will be charged or the product will be replaced at user's expense.

5.2.2 Charged Repair Services

For product failures occurring after the warranty period (2 years) or resulting from user's fault, repair service fees will be charged and the product will be replaced at user's expense.

6 Precaution and Exemption from Liability

6.1 Precaution

- Sollae Systems is not responsible for product failures occurring due to user's alteration of the product.
- Specifications of the product are subject to change without prior notice for performance improvement.
- Sollae Systems does not guarantee successful operation of the product if the product was used under conditions deviating from the product specifications.
- Reverse engineering of firmware and applications provided by Sollae Systems is prohibited.
- Use of firmware and applications provided by Sollae Systems for purposes other than those for which they were designed is prohibited.
- Do not use the product in an extremely cold or hot place or in a place where vibration is severe.
- Do not use the product in an environment in which humidity is high or a lot of oil exists.
- Do not use the product where there is caustic or combustible gas.
- Sollae Systems does not guarantee normal operation of the product under the conditions a lot of noise exists.
- Do not use the product for a purpose that requires exceptional quality and reliability relating to user's injuries or accidents – aerospace, aviation, health care, nuclear power, transportation, and safety purposes.
- Sollae Systems is not responsible for any accident or damage occurring while using the product.

6.2 Exemption from Liability

6.2.1 English version

In no event shall Sollae Systems Co., Ltd. and its distributors be liable for any damages whatsoever (including, without limitation, damages for loss of profit, operating cost for commercial interruption, loss of information, or any other financial loss) from the use or inability to use the SIG-5561 even if Sollae Systems Co., Ltd. or its distributors have been informed of such damages.

The SIG-5561 is not designed and not authorized for use in military applications, in nuclear applications, in airport applications or for use in applications involving explosives, or in medical applications, or for use in security alarm, or for use in a fire alarm, or in applications involving elevators, or in embedded applications in vehicles such as but not limited to cars, planes, trucks, boats, aircraft, helicopters, etc.

In the same way, the SIG-5561 is not designed, or intended, or authorized to test, develop, or be built into applications where failure could create a dangerous situation that may result in financial losses, damage to property, personal injury, or the death of people or animals. If you use the SIG-5561 voluntarily or involuntarily for such unauthorized applications, you agree to subtract Sollae Systems Co., Ltd. and its distributors from all liability for any claim for compensation.

Sollae Systems Co., Ltd. and its distributors entire liability and your exclusive remedy shall be Sollae Systems Co., Ltd. and its distributors option for the return of the price paid for, or repair, or replacement of the SIG-5561.

Sollae Systems Co., Ltd. and its distributors disclaim all other warranties, either expressed or implied, including, but not limited to, the implied warranties of merchantability and fitness for a particular purpose, with respect to the SIG-5561 including accompanying written material, hardware and firmware.

6.2.2 French version

- Documentation

La documentation du boîtier SIG-5561 est conçue avec la plus grande attention. Tous les efforts ont été mis en œuvre pour éviter les anomalies. Toutefois, nous ne pouvons garantir que cette documentation soit à 100% exempt de toute erreur. Les informations présentes dans cette documentation sont données à titre indicatif. Les caractéristiques techniques peuvent changer à tout moment sans aucun préavis dans le but d'améliorer la qualité et les possibilités des produits.

- Copyright et appellations commerciales

Toutes les marques, les procédés, les références et les appellations commerciales des produits cités dans la documentation appartiennent à leur propriétaire et Fabricant respectif.

- Conditions d'utilisations et limite de responsabilité

En aucun cas Sollae Systems Co., Ltd. ou un de ses distributeurs ne pourra être tenu responsable de dommages quels qu'ils soient (intégrant, mais sans limitation, les dommages pour perte de bénéfice commercial, interruption d'exploitation commerciale, perte d'informations et de données à caractère commercial ou de toute autre perte financière) provenant de l'utilisation ou de l'incapacité à pouvoir utiliser le boîtier SIG-5561, même si Sollae Systems Co., Ltd. ou un de ses distributeurs a été informé de la possibilité de tels dommages.

Le boîtier SIG-5561 est exclusivement prévu pour un usage en intérieur, dans un environnement sec et non poussiéreux. Le boîtier SIG-5561 n'est pas prévu, ni autorisé pour être utilisé en extérieur, ni de façon embarquée dans des engins mobiles de quelque nature que ce soit (voiture, camion, train, avion, etc...), ni en milieu explosif, ni dans des enceintes nucléaires, ni dans des ascenseurs, ni dans des aéroports, ni dans des enceintes hospitaliers, ni pour des applications à caractère médical, ni dans des dispositifs de détection et d'alerte anti-intrusion, ni dans des dispositifs de détection et d'alerte anti-incendie, ni dans des dispositifs d'alarme GTC, ni pour des applications militaires.

De même, le boîtier SIG-5561 n'est pas conçu, ni destiné, ni autorisé pour expérimenter, développer ou être intégré au sein d'applications dans lesquelles une défaillance de celui-ci pourrait créer une situation dangereuse pouvant entraîner des pertes financières, des dégâts matériel, des blessures corporelles ou la mort de personnes ou d'animaux. Si vous utilisez le boîtier SIG-5561 volontairement ou involontairement pour de telles applications non autorisées, vous vous engagez à soustraire Sollae Systems Co., Ltd. et ses distributeurs de toute responsabilité et de toute demande de dédommagement.

En cas de litige, l'entière responsabilité de Sollae Systems Co., Ltd. et de ses distributeurs vis-à-vis de votre recours durant la période de garantie se limitera exclusivement selon le choix de Sollae Systems Co., Ltd. et de ses distributeurs au remboursement de votre produit ou de sa réparation ou de son échange. Sollae Systems Co., Ltd. et ses distributeurs démentent toutes autres garanties, exprimées ou implicites.

Tous les boîtiers SIG-5561 sont testés avant expédition. Toute utilisation en dehors des spécifications et limites indiquées dans cette documentation ainsi que les court-circuit, les chocs, les utilisations non autorisées, pourront affecter la fiabilité, créer des dysfonctionnements et/ou la destruction du boîtier SIG-5561 sans que la responsabilité de Sollae Systems Co., Ltd. et de ses distributeurs ne puissent être mise en cause, ni que le boîtier SIG-5561 puisse être échangé au titre de la garantie.

- Rappel sur l'évacuation des équipements électroniques usagés

Le symbole de la poubelle barré présent sur le boîtier SIG-5561 indique que vous ne pouvez pas vous débarrasser de ce dernier de la même façon que vos déchets courants. Au contraire, vous êtes responsable de l'évacuation du boîtier SIG-5561 lorsqu'il arrive en fin de vie (ou qu'il est hors d'usage) et à cet effet, vous êtes tenu de le remettre à un point de collecte agréé pour le recyclage des équipements électriques et électroniques usagés. Le tri, l'évacuation et le recyclage séparés de vos équipements usagés permettent de préserver les ressources naturelles et de s'assurer que ces équipements sont recyclés dans le respect de la santé humaine et de l'environnement. Pour plus d'informations sur les lieux de collecte des équipements électroniques usagés, contacter votre mairie ou votre service local de traitement des déchets.

7 Revision History

Date	Version	Description	Author
2022.03.22.	1.0	- Initial release	Khanh
2022.06.08.	1.1	- Added the temperature unit	Khanh
2022.07.28.	1.2	- Add a notification about FCC	Roy Lee