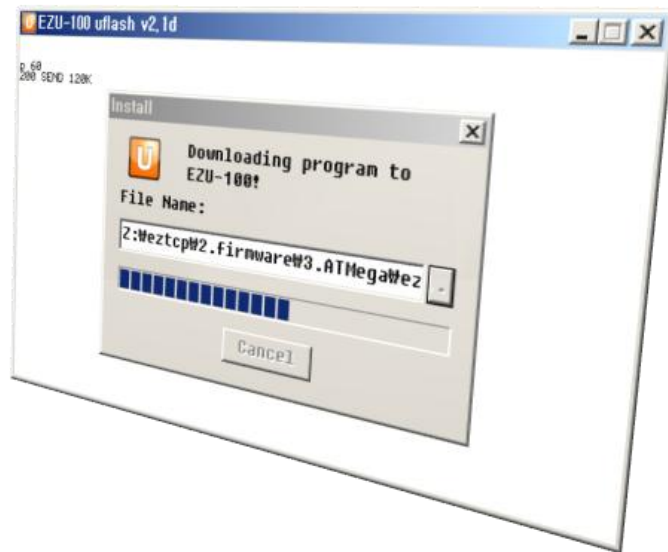


Application Note

Upgrading Firmware of EZU-100

Version 1.0
2009-09-02



Sollae Systems Co., Ltd.
<http://www.sollae.co.kr>

Contents

CONTENTS	- 1 -
1 FIRMWARE UPGRADE	- 2 -
1.1 Introduction.....	- 2 -
1.2 Firmware Upgrade	- 2 -
1.2.1 Preparation.....	- 2 -
1.2.2 Run uflash	- 2 -
1.2.3 Configuring Port.....	- 3 -
1.2.4 Selecting a Firmware.....	- 4 -
1.2.5 Resetting EZU-100.....	- 5 -
1.2.6 Restoring ISP and Reset	- 6 -
2 REVISION HISTORY	- 7 -



1 Firmware Upgrade

1.1 Introduction

Downloading F/W of EZU-100 can be implemented via its serial port. EZU-100 checks its ISP pin when it boots up. If the pin is high, EZU-100 will be operated as normal mode. Otherwise, it operates as ISP mode.

This document is based on EVB interface.

1.2 Firmware Upgrade

1.2.1 Preparation

After inserting EZU-100 into EZU-100 EVB, set JP7 of EZU-100 EVB to ISP. And connect a serial cable to PC's COM port and Power it on.

1.2.2 Run uflash

Run uflash.

uflash is a software for sending F/W file through serial.

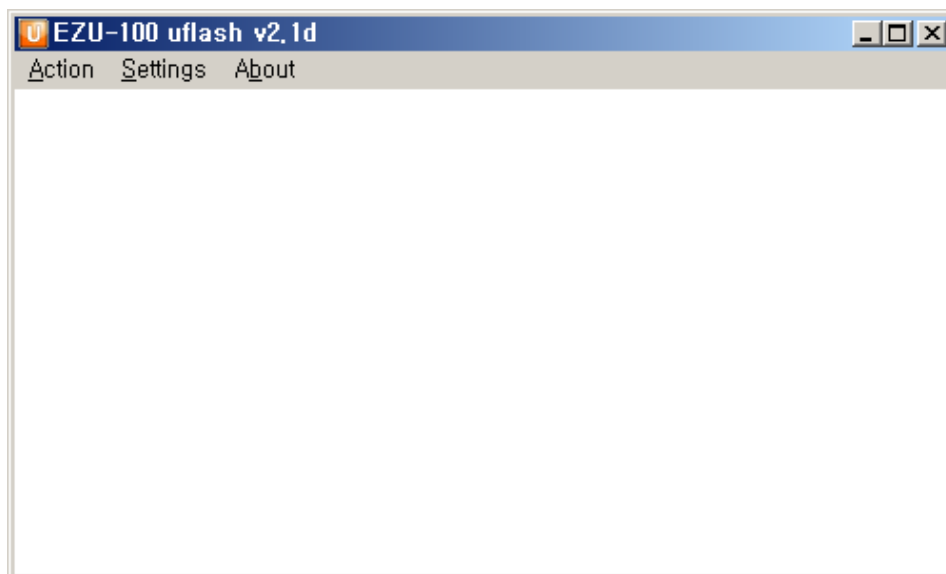


Fig 1-1 Initial window of uflash

1.2.3 Configuring Port

- Disconnect the default serial connection with [Action] -> [Disconnect].

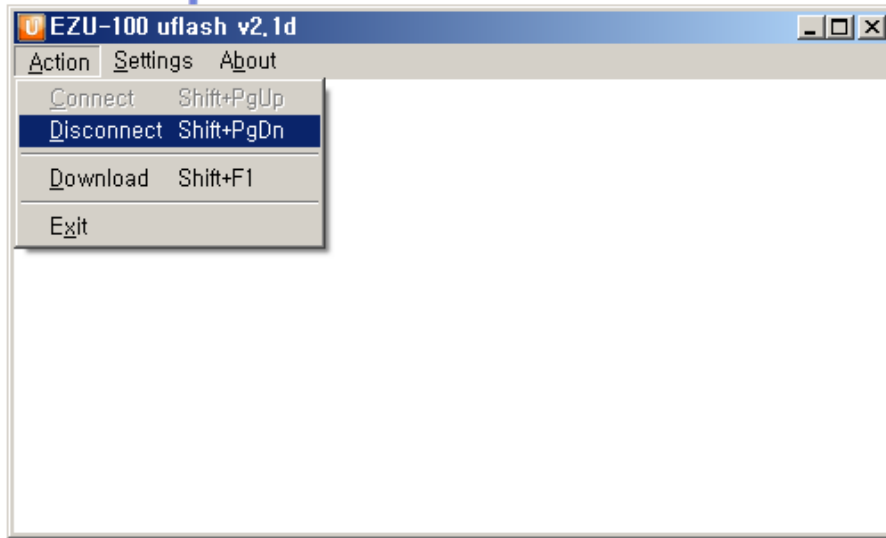


Fig 1-2 Disconnecting default connection

- Set as the following with [Settings]. And Select COM port as your environment. In this example, COM8 is used. You should select a COM port which you use.

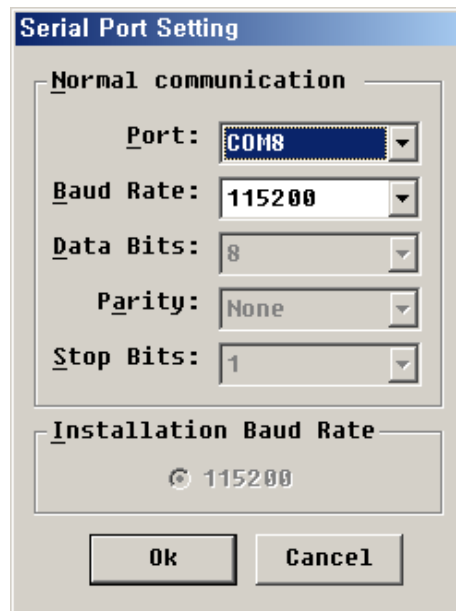


Fig 1-3 Window of Setting

- Open COM port with [Action] -> [Connect]

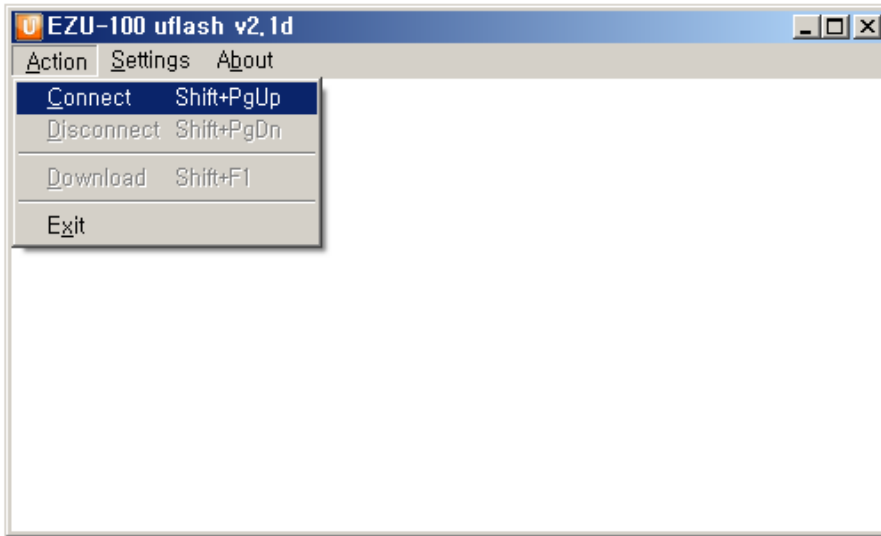


Fig 1-4 Opening COM port

1.2.4 Selecting a Firmware

- Select a firmware to download with [Action] -> [Download] -> [...]

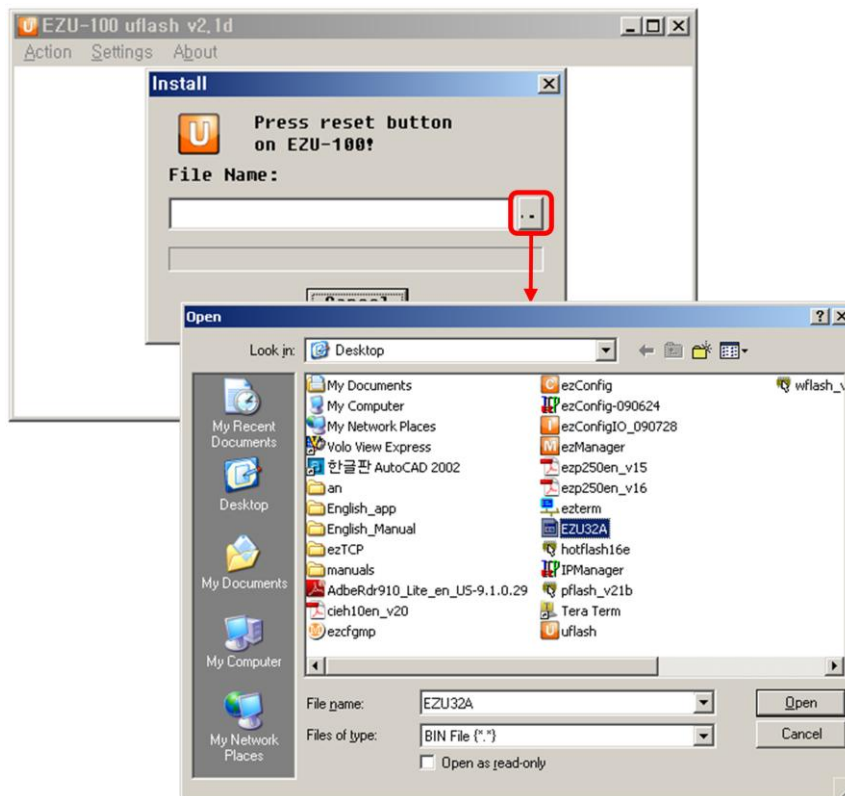


Fig 1-5 Selecting a firmware file

1.2.5 Resetting EZU-100

- If user presses the Reset switch, the firmware will be downloaded automatically.

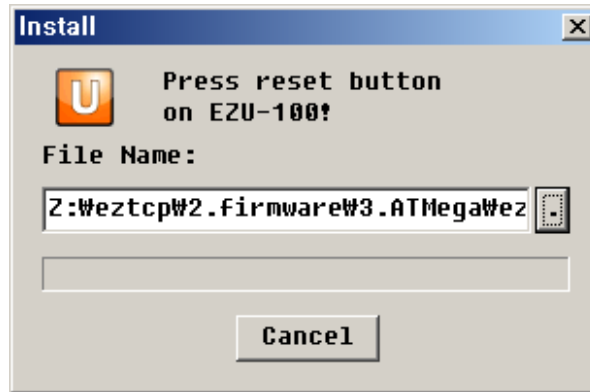


Fig 1-6 Reset

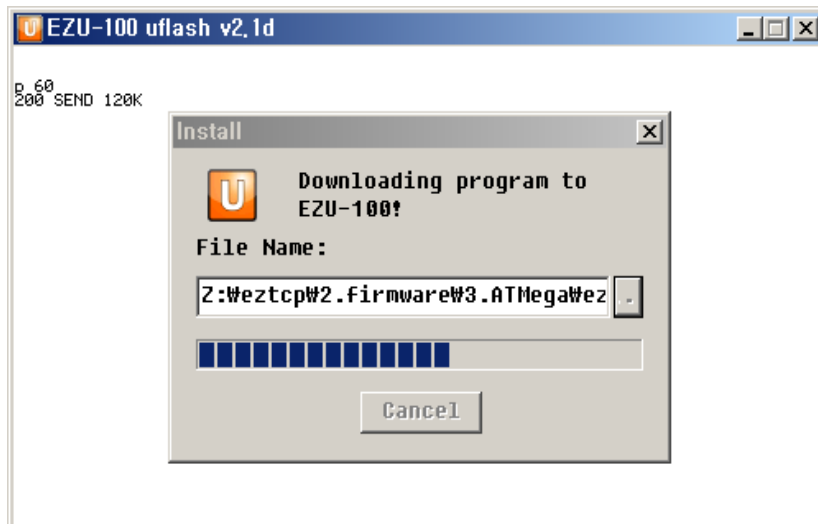


Fig 1-7 Progressing download

- If the following messages are shown in the main window of uflash, the downloading would have been completed.



Fig 1-8 Successful download

1.2.6 Restoring ISP and Reset

Restore the ISP jumper and reset.

2 Revision History

Date	Version	Description
2009.09.02	1.0	Created

